

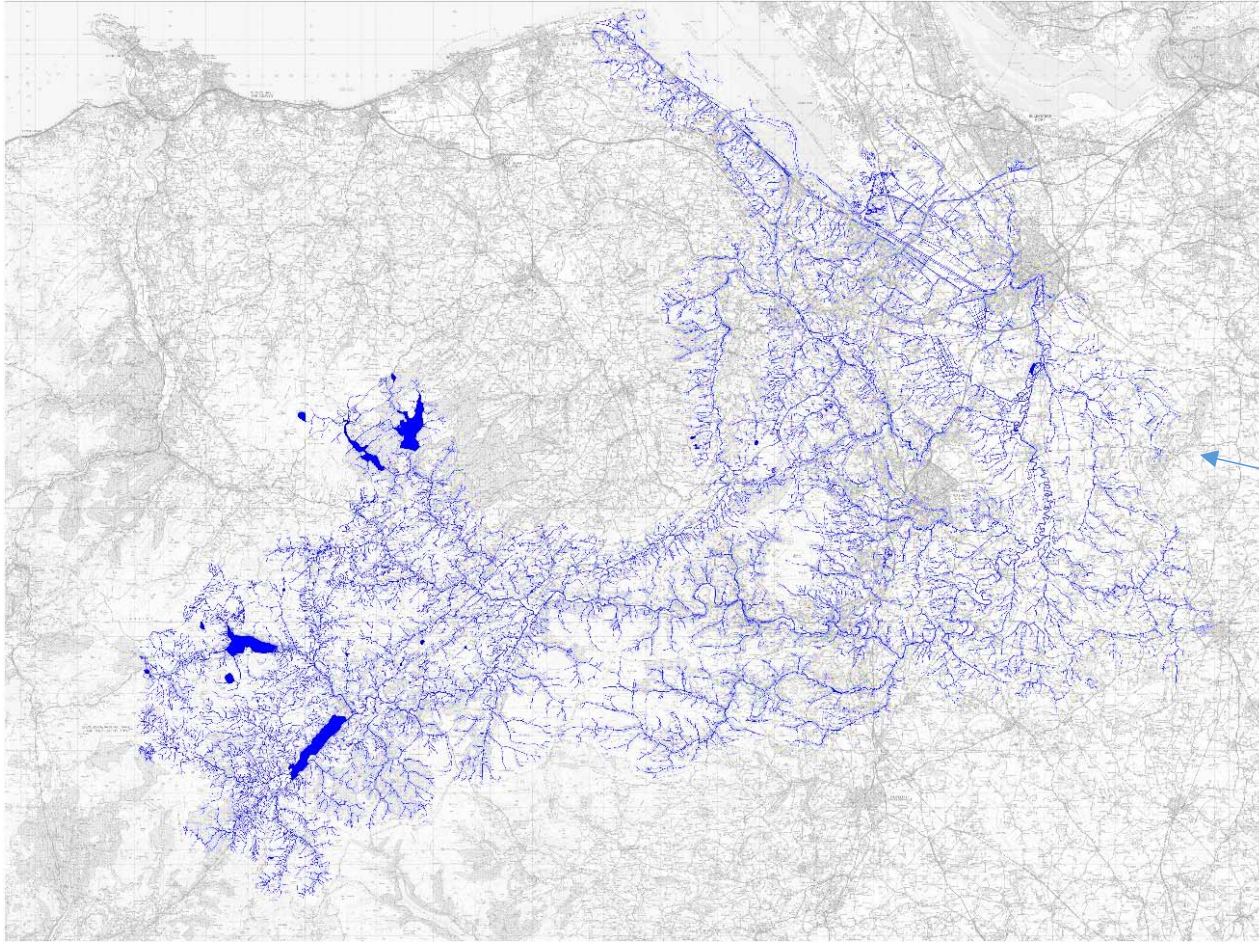


# The Dee Invasive Non-Native Species Project

Lyn Byrne  
DINNS Project Officer  
North Wales Wildlife Trust



# The Welsh Dee





# The Welsh Dee

- 2,251 Sq. km
- 21 lakes & 753km river
- Cross-border Catchment
- Flows through 7 Unitary Authorities
- Two major urban areas (Wrexham & Chester)
- Most regulated river in UK



# The Dee INNS Project

A **catchment-wide partnership** initiative which aims to **co-ordinate** the control and monitoring of Invasive Non-Native Species within the Dee catchment to ensure a **joined up** approach to INNS management is delivered.



# The Dee INNS Project

## Development

- 2012 Welsh Dee Trust INNS Workshop
- Development of Project Steering Group
- Development of Strategic Action Plan
- Securing Funding
- Implementation of Strategic Action plan



# The Dee INNS Project

## Strategic Action Plan

 Identified current action



# What's currently happening in the Catchment?

**North Wales Wildlife Trust** are carrying out a survey of the extent of Chinese Mitten Crab in the Dee

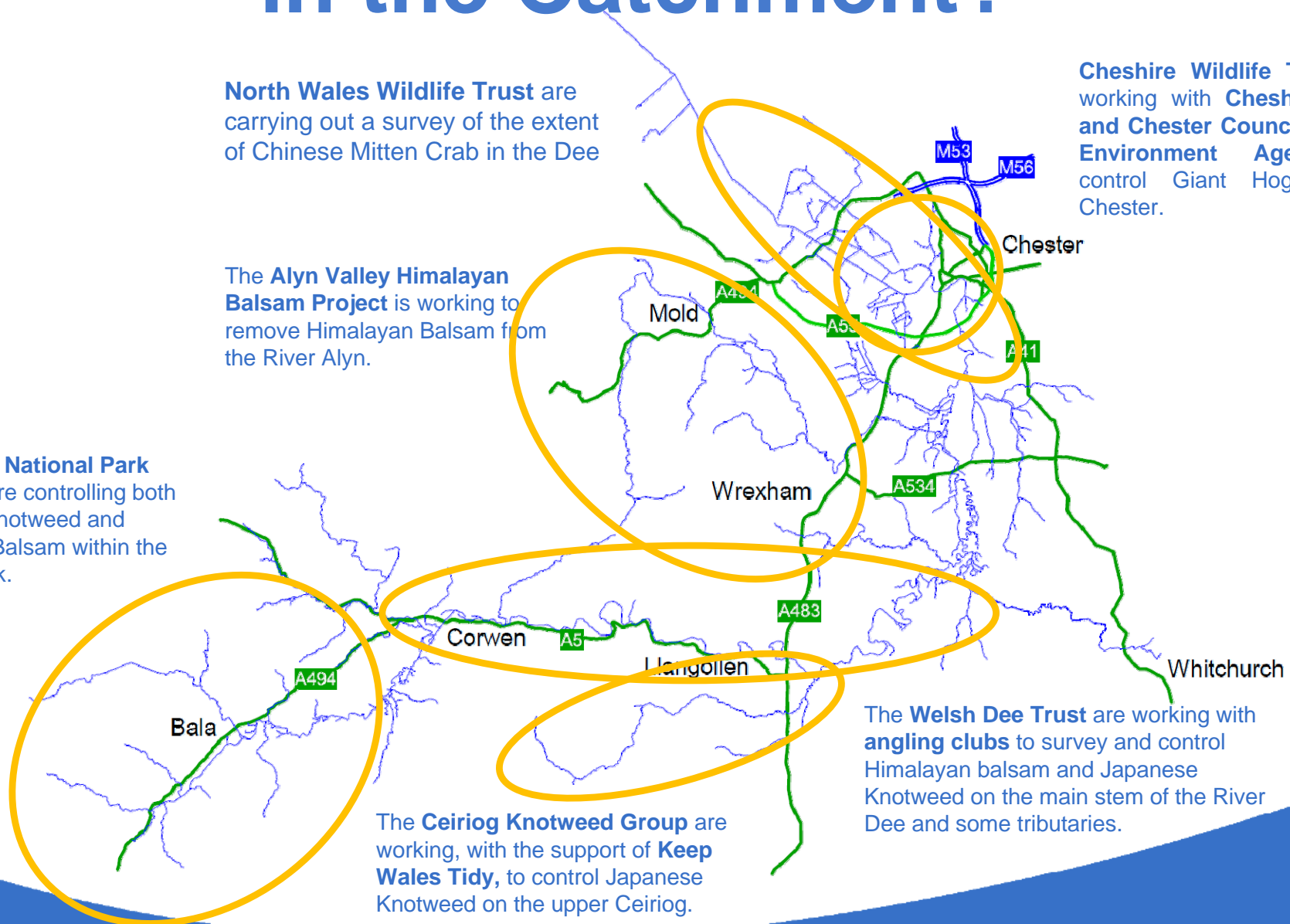
The **Alyn Valley Himalayan Balsam Project** is working to remove Himalayan Balsam from the River Alyn.

**Snowdonia National Park Authority** are controlling both Japanese Knotweed and Himalayan Balsam within the national park.

The **Ceiriog Knotweed Group** are working, with the support of **Keep Wales Tidy**, to control Japanese Knotweed on the upper Ceiriog.

**Cheshire Wildlife Trust** are working with **Cheshire West and Chester Council** and the **Environment Agency** to control Giant Hogweed in Chester.

The **Welsh Dee Trust** are working with **angling clubs** to survey and control Himalayan balsam and Japanese Knotweed on the main stem of the River Dee and some tributaries.





# The Dee INNS Project

## Strategic Action Plan

-  Identified current action
-  Collated current information



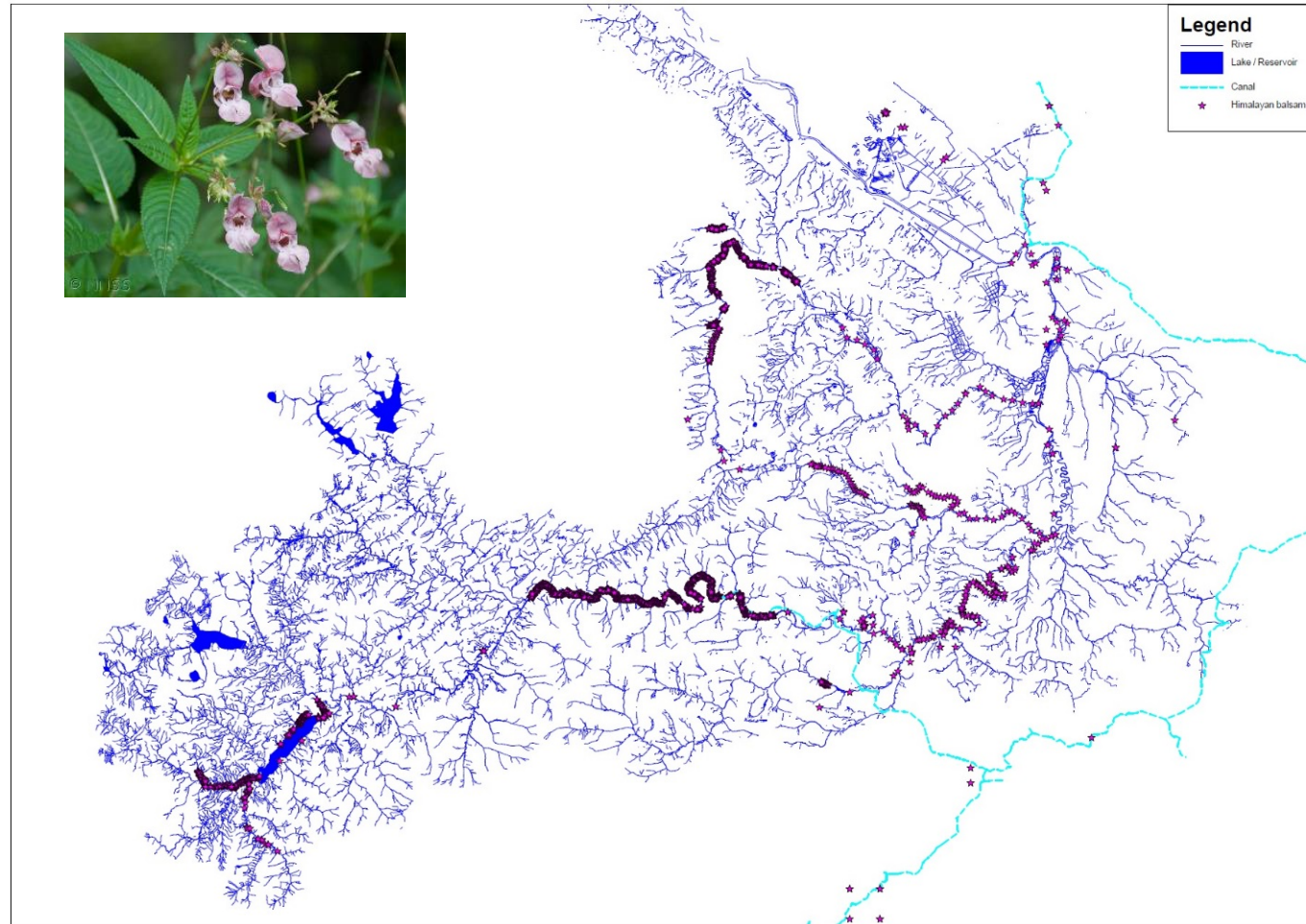


# What INNS do we have in the Dee Catchment?





# Where?





# The Dee INNS Project

## Strategic Action Plan

- Identified current action
- Collated current information
- Identified key actions to achieve project vision



# Project Objectives

- Establish extent of INNS in catchment
- Control INNS in catchment
- Develop and maintain central database of survey and control records
- Develop and establish monitoring and surveillance mechanism
- Promote and prioritise biosecurity good practice in the catchment
- Develop a sustainable management strategy to coordinate action within the catchment



# The Dee INNS Project

## Strategic Action Plan

- Identified current action
- Collated current information
- Identified key objectives and actions to achieve project vision
- Identified priorities for the catchment



# Catchment Priorities

1. Continue current control
2. Carry out baseline INNS survey
3. Biosecurity
4. Awareness raising
5. Record submission
6. Expand control
7. Identify new projects



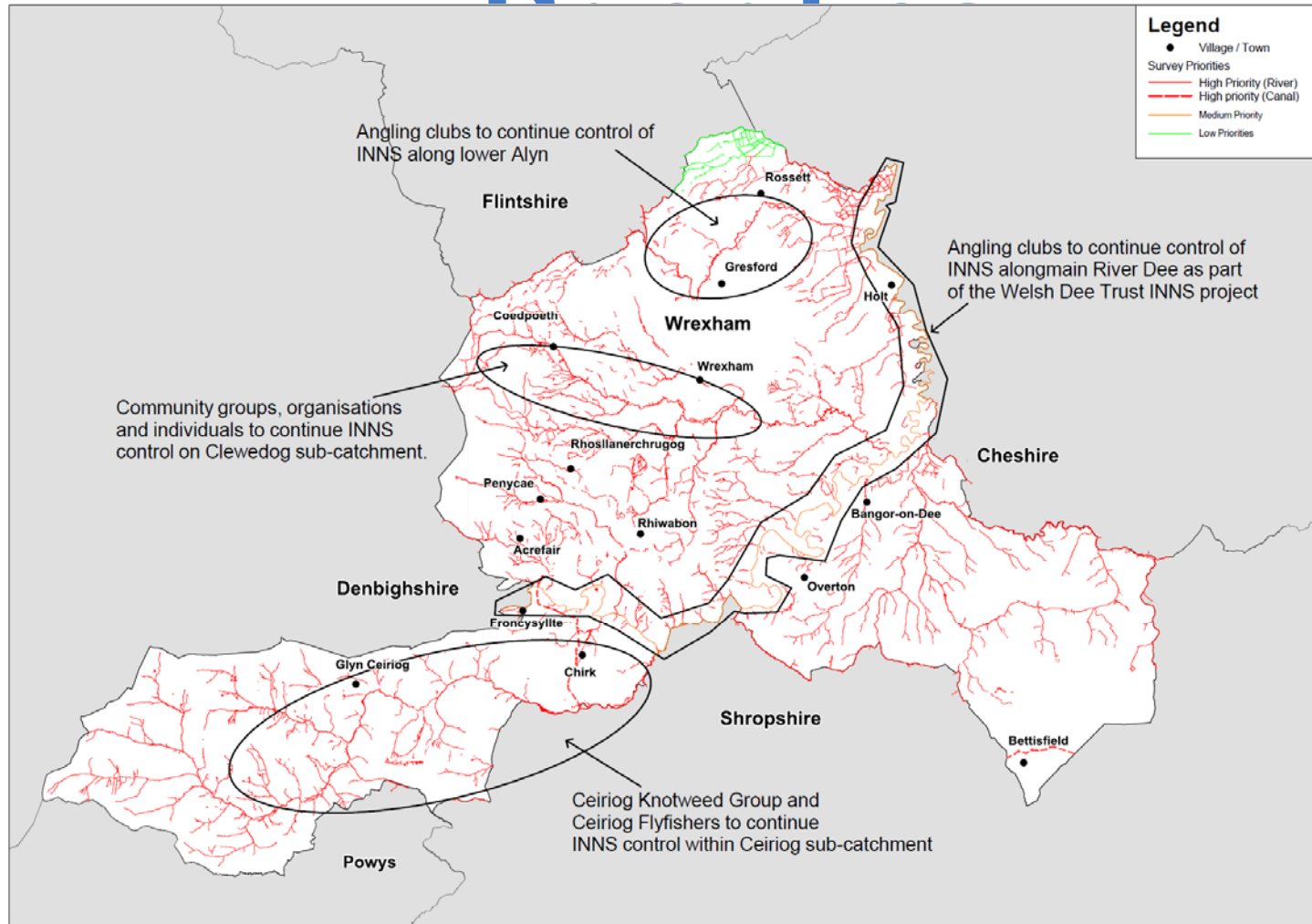
# The Dee INNS Project

## Strategic Action Plan

- Identified current action
- Collated current information
- Identified key objectives and actions to achieve project vision
- Identified priorities for the catchment
- Identified priorities for Unitary authorities



# Unitary Authority







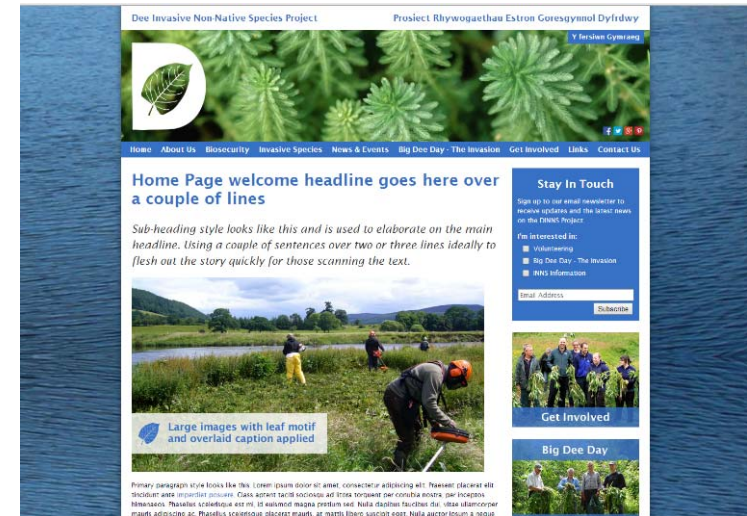
# Funding

- **£30,000** from Welsh Government to continue current control in 2013
- **£15,000** from Natural Resources Wales to employ Project Officer in 2013
- **£15,000** from Natural England to Survey Cheshire rivers in 2013
- **£5,000** from Environment Agency to control Giant Hogweed in Chester in 2013
- **£103,000** from Welsh Government to carry out surveys, continue control and raise awareness about biosecurity in Welsh catchment in 2014
- **£15,000** from Natural England to implement control in Cheshire in 2014



# 2014 Actions

- Baseline surveys
- Continue and expand control
- Biosecurity Action Plan
- Website
- Recording database
- Volunteer River Guardian network
- Awareness raising

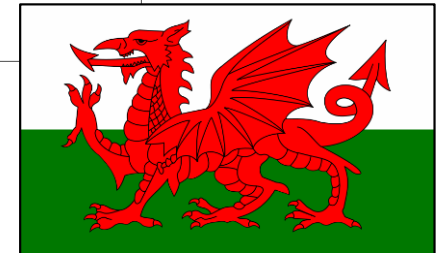
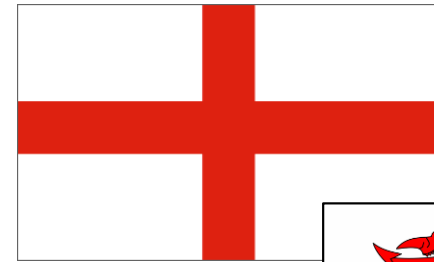




# Cross–Border working

## Pros

- Essential for effective INNS control
- Access to resources
- Reduce administrative, legal and physical barriers

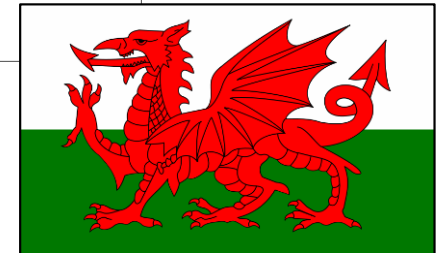
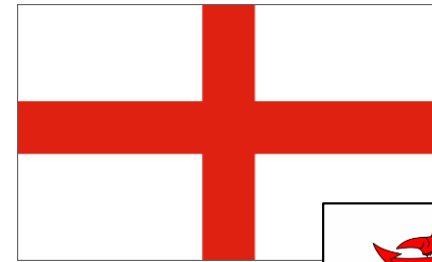




# Cross-Border working

## Cons

- Different legislation
- Different priorities & timeframes
- Restrictions on funding





# Cross–Border working

## Overcoming obstacles

- Catchment-wide events



# Big Dee Day - the Invasion Event Locations

## The Big Dee Day

## Diwrnod Mawr Y Dyffwrdd

## THE INVASION | YR YMOSODIAD



Swinchard Brook, 29 June,  
Balsam Bash & River Clean  
Keep Wales Tidy / The Conservation  
Volunteers

Chester, 28 June, Giant Hogweed Spraying -  
Environment Agency

Pandy Pool, 28 June, Balsam Bash  
Flintshire Countryside Service

Heronbridge Chester, 29 June,  
Balsam Bash - Friends of the Meadows

Rhagat Hall, Carrog, 29 June,  
Work Party  
Wirral Game Fishing Club

Wormswood, 30 June, Work Party -  
Rossett & Gresford Flyfishers

Fardon, 28 & 29 June, Balsam Bash -  
Chester Zoo / Cheshire Wildlife Trust

Ddol Afon, Corwen, 28 June,  
Balsam Bash & BBQ  
Clwydian Range & Dee Valley AONB /  
Denbighshire Countryside Service

Erdig Hall, 28 & 29 June,  
Balsam Bash - National Trust

Dongray Hall, 29 June, Work Party  
Prince Albert Angling Society

Llangollen, 29 June, Balsam Bash  
Clwydian Range & Dee Valley AONB /  
Denbighshire Countryside Service

Ty Mawr Country Park, 28 & 29  
June, Launch & Balsam Bash

Bala, 28 June, Balsam Bash & BBQ  
Snowdonia National Park Authority /  
Gwynedd County Council

SNOWDONIA  
NATIONAL PARK



# Cross–Border working

## Overcoming obstacles

- Catchment-wide events
- Inclusive steering group





# Cross–Border working

## Overcoming obstacles

- Catchment-wide events
- Inclusive steering group
- Borderless funding







# Thank you!

[LynByrne@wildlifetrustswales.org](mailto:LynByrne@wildlifetrustswales.org)

[www.dinns.org.uk](http://www.dinns.org.uk)

